

CLIENT: Dr.Ganja

PRODUCT NAME: HTE Limoncello - Raw Material Analysis

LOT: N/A

BATCH: J070124AF

MATRIX: Hemp Oil

REPORT CREATED: 07/09/2024

Analyte	LOD (%)	%	mg/g
CBC	0.030		
CBCA	0.030	2.514	25.142
CBCV	0.030		
CBD	0.030		
CBDA	0.030	0.411	4.113
CBDV	0.030		
CBDVA	0.030		
CBG	0.030		
CBGA	0.030	4.798	47.978
CBL	0.030		
CBLA	0.030		
CBN	0.030		
CBNA	0.030	0.245	2.452
CBT	0.030		
Δ8-THC	0.030		
Δ9-THC	0.030		
Δ9-THCA-A	0.030	72.376	723.757
Δ9-THCV	0.030		
Δ9-THCVA	0.030	0.667	6.673
9R-HHC	0.030		
9S-HHC	0.030		

71.047%

ACTIVE CANNABINOIDS



Total THC = THCa * 0.877 + Δ9-THC; Total THCV = THCVa * 0.877 + THCV; Total CBD = CBDa * 0.877 + CBD;
 Total CBG = CBGa * 0.877 + CBG; Total CBN = CBNa * 0.877 + CBN
 LOD = Limit of Detection; ND = Not Detected
 Total THC Measurement of Uncertainty: ± 1%
 Total CBD Measurement of Uncertainty: ± 1%



DATA COLLECTED BY Cannalyze.co

Reporting limits will vary based on sample extraction weight used for the analysis. The results of this report are based solely on the sample submitted and cannot be reproduced. Average values are used to determine the final values.

Dr. Ganja

Sample: 07-09-2024-51887

Sample Received: 07/09/2024;

Report Created: 07/18/2024; Expires: 07/18/2025

J070124AF - HTE Limoncello

Concentrate & Extracts



Terpenes

(Testing Method: HS-GC/MS, CON-P-4000)

Date Tested: 07/09/2024

Analyte	LOD	LOQ	Mass	Mass	
	PPM	PPM	PPM	mg/g	
α-Bisabolol	0.750	3.000	5653.350	5.653	
α-Humulene	0.750	3.000	13613.790	13.614	
α-Pinene	0.750	3.000	4471.860	4.472	
α-Terpinene	0.750	3.000	380.140	0.380	
1,8-Cineole	0.750	3.000	679.650	0.680	
β-Caryophyllene	0.750	3.000	43883.620	43.884	
β-Myrcene	0.750	3.000	21681.660	21.682	
Borneol	0.750	3.000	585.140	0.585	
Camphene	0.750	3.000	1439.980	1.440	
Carene	0.750	3.000	ND	ND	
Caryophyllene Oxide	3.000	3.000	ND	ND	
Citral	0.750	3.000	ND	ND	
Dihydrocarveol	0.750	3.000	ND	ND	
Fenchone	0.750	3.000	379.630	0.380	
γ-Terpinene	0.750	3.000	319.220	0.319	
Limonene	0.750	3.000	16092.060	16.092	
Linalool	0.750	3.000	16221.250	16.221	
Menthol	0.750	3.000	ND	ND	
Nerolidol	0.750	3.000	ND	ND	
Ocimene	0.750	3.000	4254.730	4.255	
Pulegone	0.750	3.000	ND	ND	
Terpinolene	0.750	3.000	559.560	0.560	
Total			130215.640	130.216	13.022 %

Primary Aromas

Cinnamon



Clove



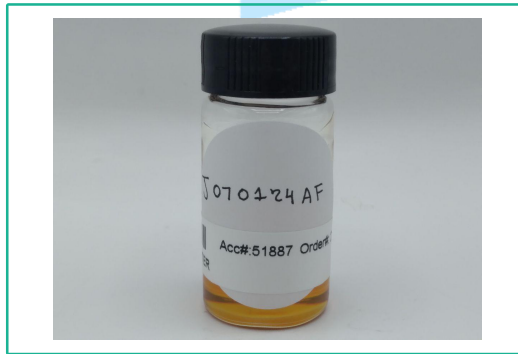
Lavender



Lime



Hops



Total terpenes value is qualitative and includes concentrations outside the assay quantitative analytical range.