

CLIENT: Dr.Ganja

PRODUCT NAME: HTE Grape Gas - Raw Material Analysis

LOT: N/A

BATCH: A041626AD

MATRIX: Hemp Oil

REPORT CREATED: 04/19/2026

| Analyte           | LOD (%) | %      | mg/g    |
|-------------------|---------|--------|---------|
| CBC               | 0.030   |        |         |
| CBCA              | 0.030   | 0.848  | 8.485   |
| CBCV              | 0.030   |        |         |
| CBD               | 0.030   |        |         |
| CBDA              | 0.030   | 0.234  | 2.344   |
| CBDV              | 0.030   |        |         |
| CBDVA             | 0.030   |        |         |
| CBG               | 0.030   |        |         |
| CBGA              | 0.030   | 1.719  | 17.190  |
| CBL               | 0.030   |        |         |
| CBLA              | 0.030   |        |         |
| CBN               | 0.030   |        |         |
| CBNA              | 0.030   | 0.496  | 4.959   |
| CBT               | 0.030   |        |         |
| $\Delta$ 8-THC    | 0.030   |        |         |
| $\Delta$ 9-THC    | 0.030   |        |         |
| $\Delta$ 9-THCA-A | 0.030   | 74.995 | 749.950 |
| $\Delta$ 9-THCP   | 0.030   |        |         |
| $\Delta$ 9-THCVA  | 0.030   |        |         |
| 9R-HHC            | 0.030   |        |         |
| 9S-HHC            | 0.030   |        |         |

**68.663%**  
ACTIVE CANNABINOIDS



Total THC = THCa \* 0.877 +  $\Delta$ 9-THC; Total THCV = THCVa \* 0.877 + THCV; Total CBD = CBDa \* 0.877 + CBD;  
Total CBG = CBGa \* 0.877 + CBG; Total CBN = CBNa \* 0.877 + CBN  
LOD = Limit of Detection; ND = Not Detected  
Total THC Measurement of Uncertainty:  $\pm$  1%  
Total CBD Measurement of Uncertainty:  $\pm$  1%



DATA COLLECTED BY Cannalyze.co

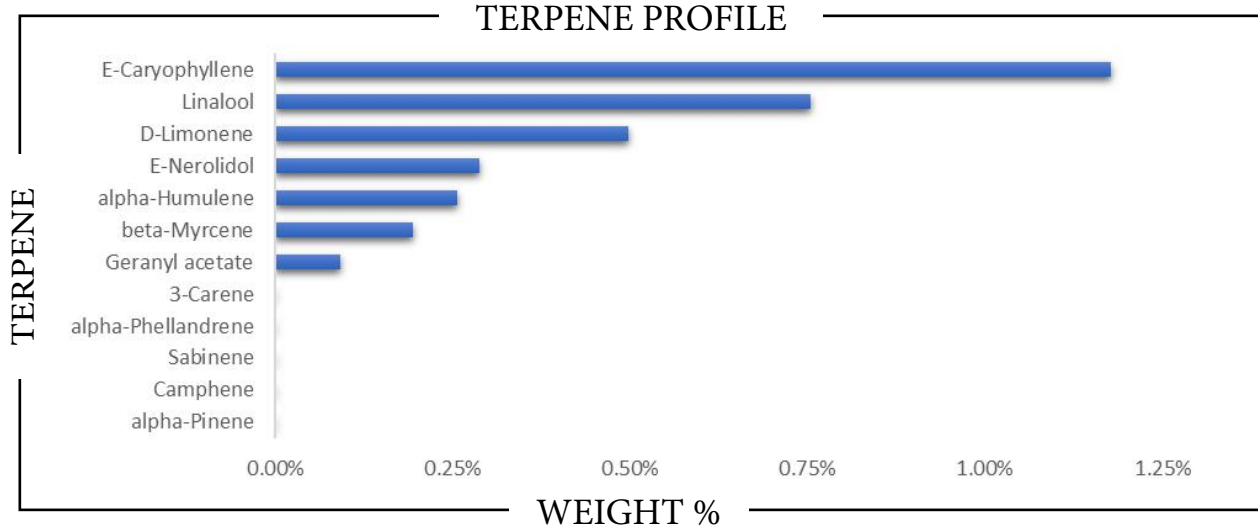
Reporting limits will vary based on sample extraction weight used for the analysis. The results of this report are based solely on the sample submitted and cannot be reproduced. Average values are used to determine the final values.

REPORT PREPARED FOR: \_\_\_\_\_

 PROJECT# \_\_\_\_\_  
 LAB ID \_\_\_\_\_  
 RECEIVED DATE \_\_\_\_\_  
 REPORT DATE \_\_\_\_\_


SAMPLE NAME: \_\_\_\_\_

## TERPENES



| TERPENE            | WEIGHT % | TERPENE             | WEIGHT % | TERPENE          | WEIGHT % |
|--------------------|----------|---------------------|----------|------------------|----------|
| alpha-Bisabolol    |          | Caryophyllene oxide |          | Limonene         |          |
| alpha-Cedrene      |          | Cedrol              |          | Linalool         |          |
| alpha-Humulene     |          | Eucalyptol          |          | Nerol            |          |
| alpha-Phellandrene |          | Farnesene           |          | Nerolidol        |          |
| alpha-Pinene       |          | Fenchone            |          | Ocimene          |          |
| alpha-Terpinene    |          | Fenchyl Alcohol     |          | Pulegone         |          |
| beta-Caryophyllene |          | gamma-Terpinene     |          | Sabinene         |          |
| beta-Myrcene       |          | Geraniol            |          | Sabinene hydrate |          |
| beta-Pinene        |          | Geranyl acetate     |          | Terpineol        |          |
| Borneol            |          | Guaiol              |          | Terpinolene      |          |
| Camphene           |          | Hexahydrothymol     |          | Valencene        |          |
| Camphor            |          | Isoborneol          |          |                  |          |
| 3-Carene           |          | Isopulegol          |          |                  |          |

 Prepared By: \_\_\_\_\_ Analyzed By: \_\_\_\_\_  
 Prepared Date: \_\_\_\_\_ Analyzed Date: \_\_\_\_\_  
 Analysis Batch: \_\_\_\_\_  
 Analyzed by method TP-TER-01 by HS-GCMS  
 ND = Analyte not detected  
 PPB = Parts per billion


APPROVED BY:  
JUSTIN HALL  
 LAB DIRECTOR

SIGNATURE

SIGNED ON