

CLIENT: Dr.Ganja

PRODUCT NAME: HTE Sour Diesel - Raw Material Analysis

LOT: N/A

BATCH: A041626AF

MATRIX: Hemp Oil

REPORT CREATED: 04/19/2026

| Analyte | LOD (%) | % | mg/g |
|-----------|---------|--------|---------|
| CBC | 0.030 | | |
| CBCA | 0.030 | 0.486 | 4.862 |
| CBCV | 0.030 | | |
| CBD | 0.030 | | |
| CBDA | 0.030 | 0.256 | 2.560 |
| CBDV | 0.030 | | |
| CBDVA | 0.030 | | |
| CBG | 0.030 | | |
| CBGA | 0.030 | 1.461 | 14.611 |
| CBL | 0.030 | | |
| CBLA | 0.030 | | |
| CBN | 0.030 | | |
| CBNA | 0.030 | 0.262 | 2.620 |
| CBT | 0.030 | | |
| Δ8-THC | 0.030 | | |
| Δ9-THC | 0.030 | | |
| Δ9-THCA-A | 0.030 | 69.688 | 696.880 |
| Δ9-THCP | 0.030 | | |
| Δ9-THCVA | 0.030 | | |
| 9R-HHC | 0.030 | | |
| 9S-HHC | 0.030 | | |

63.279%
ACTIVE CANNABINOIDS



Total THC = THCa * 0.877 + Δ9-THC; Total THCV = THCVa * 0.877 + THCV; Total CBD = CBDa * 0.877 + CBD;
 Total CBG = CBGa * 0.877 + CBG; Total CBN = CBNa * 0.877 + CBN
 LOD = Limit of Detection; ND = Not Detected
 Total THC Measurement of Uncertainty: ± 1%
 Total CBD Measurement of Uncertainty: ± 1%



DATA COLLECTED BY Cannalyze.co

Reporting limits will vary based on sample extraction weight used for the analysis. The results of this report are based solely on the sample submitted and cannot be reproduced. Average values are used to determine the final values.

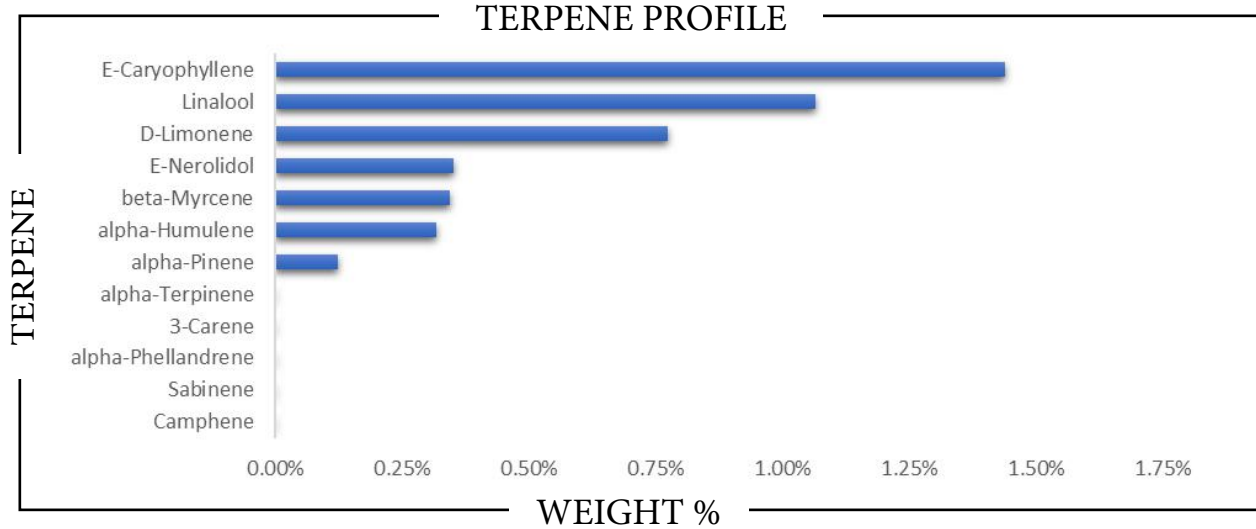
REPORT PREPARED FOR: _____

PROJECT# _____
LAB ID _____
RECEIVED DATE _____
REPORT DATE _____



SAMPLE NAME: _____

TERPENES



| TERPENE | WEIGHT % | TERPENE | WEIGHT % | TERPENE | WEIGHT % |
|--------------------|----------|---------------------|----------|------------------|----------|
| alpha-Bisabolol | | Caryophyllene oxide | | Limonene | |
| alpha-Cedrene | | Cedrol | | Linalool | |
| alpha-Humulene | | Eucalyptol | | Nerol | |
| alpha-Phellandrene | | Farnesene | | Nerolidol | |
| alpha-Pinene | | Fenchone | | Ocimene | |
| alpha-Terpinene | | Fenchyl Alcohol | | Pulegone | |
| beta-Caryophyllene | | gamma-Terpinene | | Sabinene | |
| beta-Myrcene | | Geraniol | | Sabinene hydrate | |
| beta-Pinene | | Geranyl acetate | | Terpineol | |
| Borneol | | Guaiol | | Terpinolene | |
| Camphene | | Hexahydrothymol | | Valencene | |
| Camphor | | Isoborneol | | | |
| 3-Carene | | Isopulegol | | | |

Prepared By: _____ Analyzed By: _____
Prepared Date: _____ Analyzed Date: _____
Analysis Batch: _____
Analyzed by method TP-TER-01 by HS-GCMS
ND = Analyte not detected
PPB = Parts per billion



APPROVED BY:
JUSTIN HALL
LAB DIRECTOR



SIGNATURE

SIGNED ON