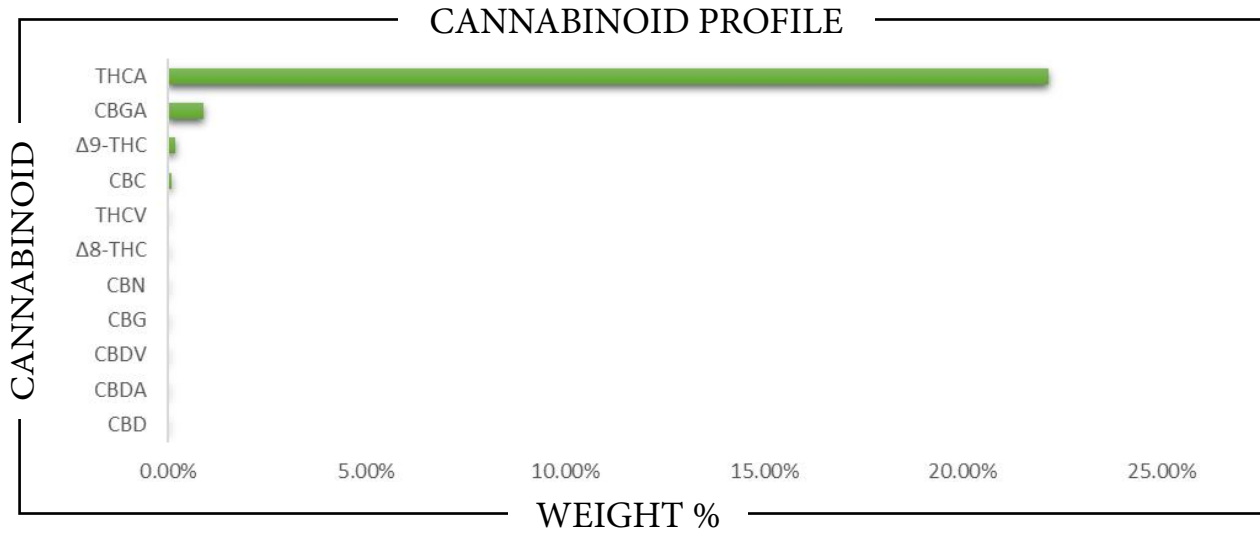


REPORT PREPARED FOR: _____

PROJECT# _____
 LAB ID _____
 RECEIVED DATE _____
 REPORT DATE _____



SAMPLE NAME: _____



CBC	→	→	→	→
CBD	→	→	→	→
CBDA	→	→	→	→
CBDV	→	→	→	→
CBG	→	→	→	→
CBGA	→	→	→	→
CBN	→	→	→	→
Δ8-THC	→	→	→	→
Δ9-THC	→	→	→	→
THCA	→	→	→	→
THCv	→	→	→	→
Total CBD	→	→	→	→
Total CBG	→	→	→	→
Total THC	→	→	→	→

Analysis Method: TP-POT-05 By HPLC-VWD	Prepared By: _____	Analyzed By: _____
Total THC = (0.877 x THCA) + Δ9-THC	Prep Date: _____	Analysis Date: _____
Total CBD = (0.877 x CBDA) + CBD	Batch ID: _____	
Total CBG = (0.877 x CBGA) + CBG		
ND = Not Detected		



APPROVED BY:
JUSTIN HALL
 LAB DIRECTOR

Justin Hall
 SIGNATURE | SIGNED ON

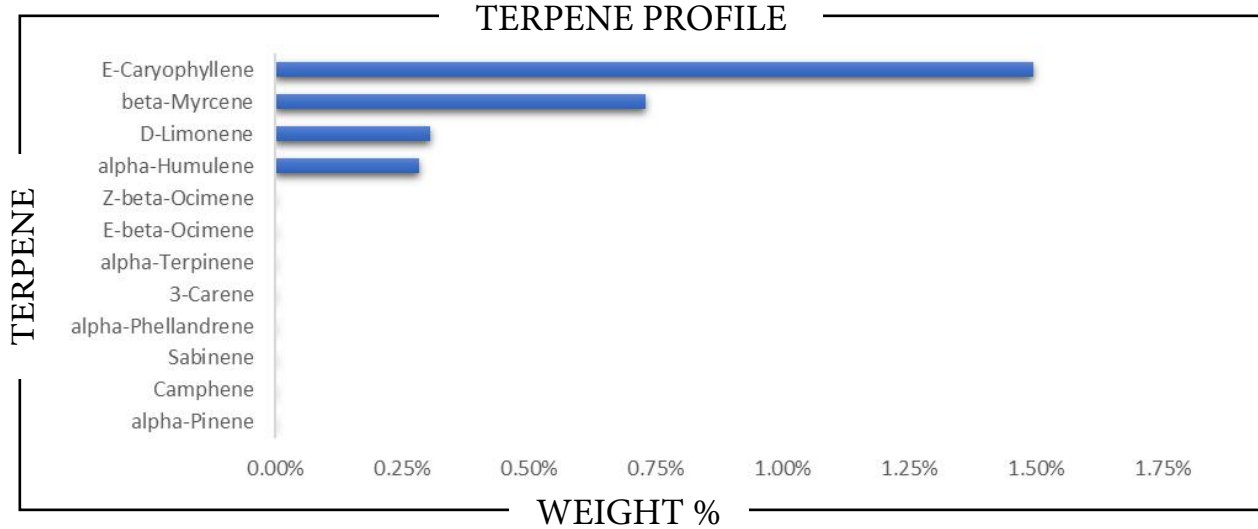
This is a Badger Labs Certificate of Analysis and may not be reproduced without written approval from Badger Labs. Badger Labs maintains strict confidentiality of all client data. Any information regarding an analysis is shared only with the individuals designated on the Laboratory Chain of Custody (COC) as contacts unless authorization is received. Limits of Quantification (LOQ) are available upon request. This report complies to the requirements of the ISO/IEC 17025:2017 standard. Review the results, expanded uncertainty and specifications to ensure they meet your requirements. Uncertainty values are available upon request.

REPORT PREPARED FOR: _____

 PROJECT# _____
 LAB ID _____
 RECEIVED DATE _____
 REPORT DATE _____


SAMPLE NAME: _____

TERPENES



TERPENE	WEIGHT %	TERPENE	WEIGHT %	TERPENE	WEIGHT %
alpha-Bisabolol		Caryophyllene oxide		Limonene	
alpha-Cedrene		Cedrol		Linalool	
alpha-Humulene		Eucalyptol		Nerol	
alpha-Phellandrene		Farnesene		Nerolidol	
alpha-Pinene		Fenchone		Ocimene	
alpha-Terpinene		Fenchyl Alcohol		Pulegone	
beta-Caryophyllene		gamma-Terpinene		Sabinene	
beta-Myrcene		Geraniol		Sabinene hydrate	
beta-Pinene		Geranyl acetate		Terpineol	
Borneol		Guaiol		Terpinolene	
Camphene		Hexahydrothymol		Valencene	
Camphor		Isoborneol			
3-Carene		Isopulegol			

 Prepared By: _____ Analyzed By: _____
 Prepared Date: _____ Analyzed Date: _____
 Analysis Batch: _____
 Analyzed by method TP-TER-01 by HS-GCMS
 ND = Analyte not detected
 PPB = Parts per billion


APPROVED BY:
JUSTIN HALL
 LAB DIRECTOR



SIGNATURE

SIGNED ON