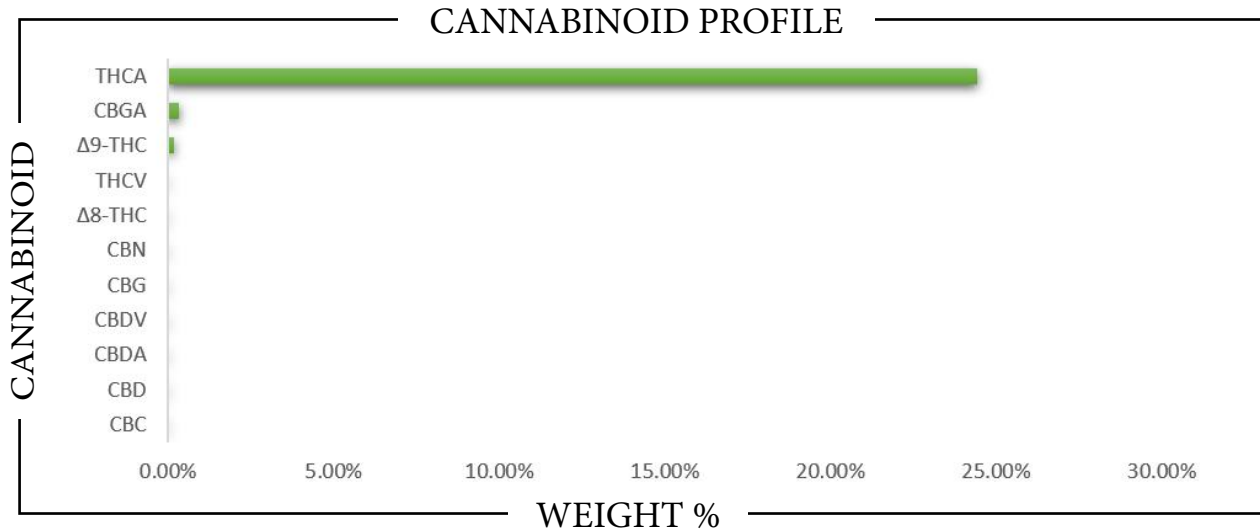


REPORT PREPARED FOR: _____

 PROJECT# _____
 LAB ID _____
 RECEIVED DATE _____
 REPORT DATE _____


SAMPLE NAME: _____

SAMPLE BATCH: _____



| | | |
|-----------|---|---|
| | | |
| CBC | → | → |
| CBD | → | → |
| CBDA | → | → |
| CBDV | → | → |
| CBG | → | → |
| CBGA | → | → |
| CBN | → | → |
| Δ8-THC | → | → |
| Δ9-THC | → | → |
| THCA | → | → |
| THCV | → | → |
| | | |
| Total CBD | → | → |
| Total CBG | → | → |
| Total THC | → | → |



Analysis Method: TP-POT-05
 By HPLC-VWD
 Total THC = (0.877 x THCA) + Δ9-THC
 Total CBD = (0.877 x CBDA) + CBD
 Total CBG = (0.877 x CBGA) + CBG
 ND = Not Detected

Prepared By: _____
 Prep Date: _____
 Batch ID: _____

Analyzed By: _____
 Analysis Date: _____



APPROVED BY:
JUSTIN HALL
 LAB DIRECTOR

Justin Hall
 SIGNATURE

SIGNED ON

REPORT PREPARED FOR: _____

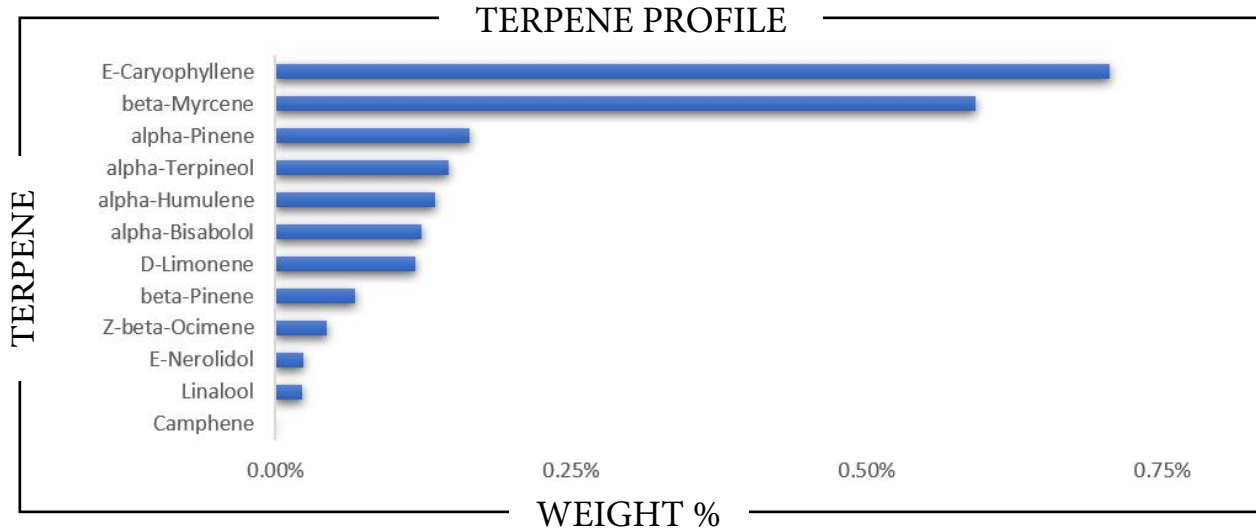
PROJECT# _____
 LAB ID _____
 RECEIVED DATE _____
 REPORT DATE _____



SAMPLE NAME: _____

SAMPLE BATCH: _____

TERPENES



| TERPENE | WEIGHT % | TERPENE | WEIGHT % | TERPENE | WEIGHT % |
|--------------------|----------|---------------------|----------|------------------|----------|
| alpha-Bisabolol | | Caryophyllene oxide | | Limonene | |
| alpha-Cedrene | | Cedrol | | Linalool | |
| alpha-Humulene | | Eucalyptol | | Nerol | |
| alpha-Phellandrene | | Farnesene | | Nerolidol | |
| alpha-Pinene | | Fenchone | | Ocimene | |
| alpha-Terpinene | | Fenchyl Alcohol | | Pulegone | |
| beta-Caryophyllene | | gamma-Terpinene | | Sabinene | |
| beta-Myrcene | | Geraniol | | Sabinene hydrate | |
| beta-Pinene | | Geranyl acetate | | Terpineol | |
| Borneol | | Guaiol | | Terpinolene | |
| Camphene | | Hexahydrothymol | | Valencene | |
| Camphor | | Isoborneol | | | |
| 3-Carene | | Isopulegol | | | |

Prepared By: _____ Analyzed By: _____
 Prepared Date: _____ Analyzed Date: _____
 Analysis Batch: _____
 Analyzed by method TP-TER-01 by HS-GCMS
 ND = Analyte not detected
 PPB = Parts per billion



APPROVED BY:
JUSTIN HALL
 LAB DIRECTOR



SIGNATURE

SIGNED ON